



HOW TO REACH US BY AIR

This document is not exhaustive of all airspaces and does not exempt the pilot in command from consulting current aeronautical charts, NOTAMs, and the AIP.

Valbrembo Radio 122.605 MHz

ARRIVALS FROM THE SOUTH:

After listening to Orio ATIS 118.540 Mhz

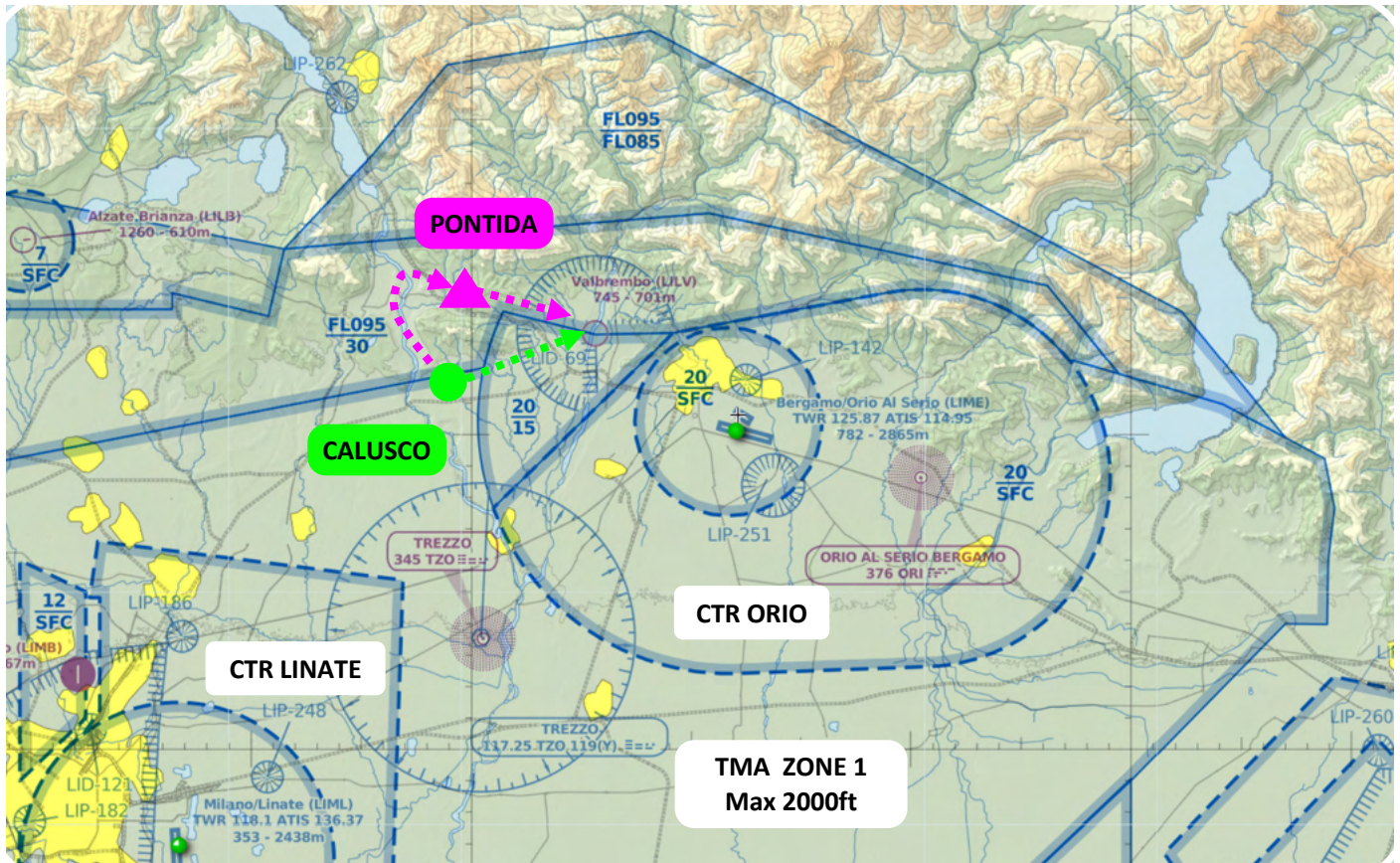
RWY 28 in use at Orio (LIME):

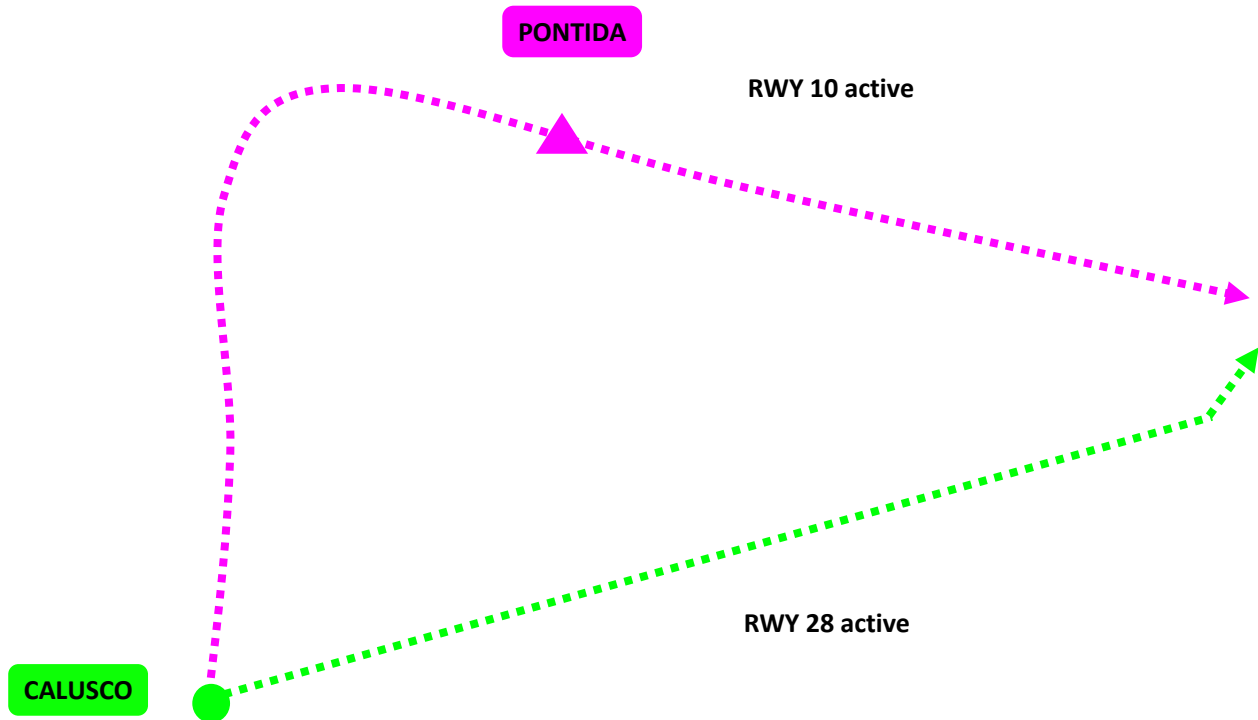
A possible reporting point for switching from Milano Information to Valbrembo Radio is **CALUSCO** (TMA zone 1 max 2000ft).

The circuit is standard, preferred landing runway is 20.

RWY 10 in use at Orio (LIME):

Please avoid cutting through Orio's final approach. Use **PONTIDA** as the access/reporting point for switching from Milano Information to Valbrembo Radio, then proceed as indicated below.





ARRIVALS FROM NORTH:

After listening to Ororo ATIS 118.540 Mhz

RWY 28 IN USE AT ORORO (LIME):

For arrivals from the north that do not involve Ororo's CTR, head directly towards the airfield. The circuit is standard, preferred landing runway is 20.

RWY 10 IN USE AT ORORO (LIME):

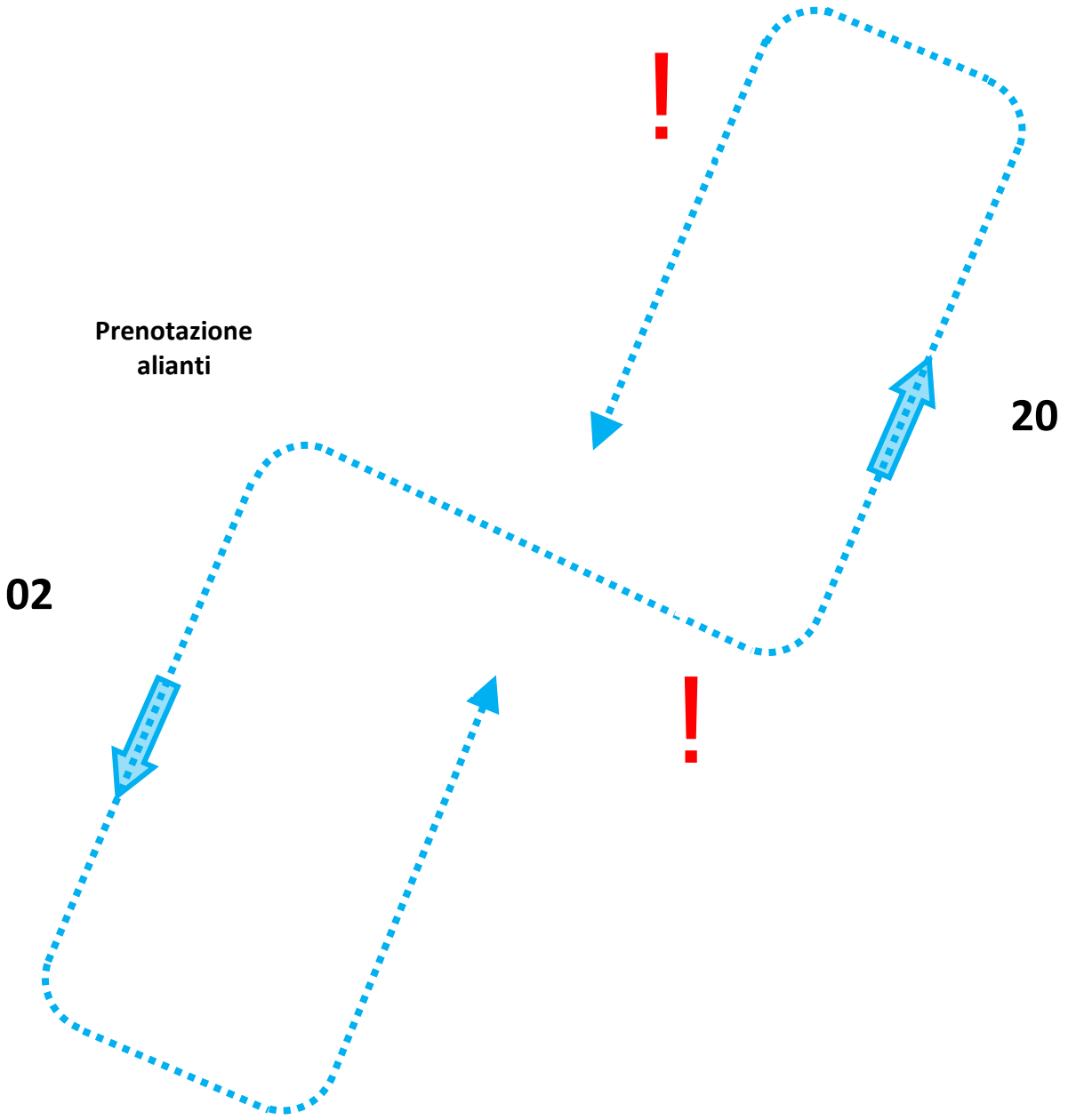
The circuit altitude is reduced to 1450ft AMSL, proceed as described below.

**The airport includes the dangerous area D69
"Heavy glider activity"**

TOUCH AND GO / LOW PASSES PROHIBITED

Gliders in the circuit fly at slower speeds compared to airplanes and follow a generally tighter circuit.

Pay close attention to potential traffic conflicts.



02

Prenotazione
alianti

20

RWY 10 IN USE AT ORIO (LIME)

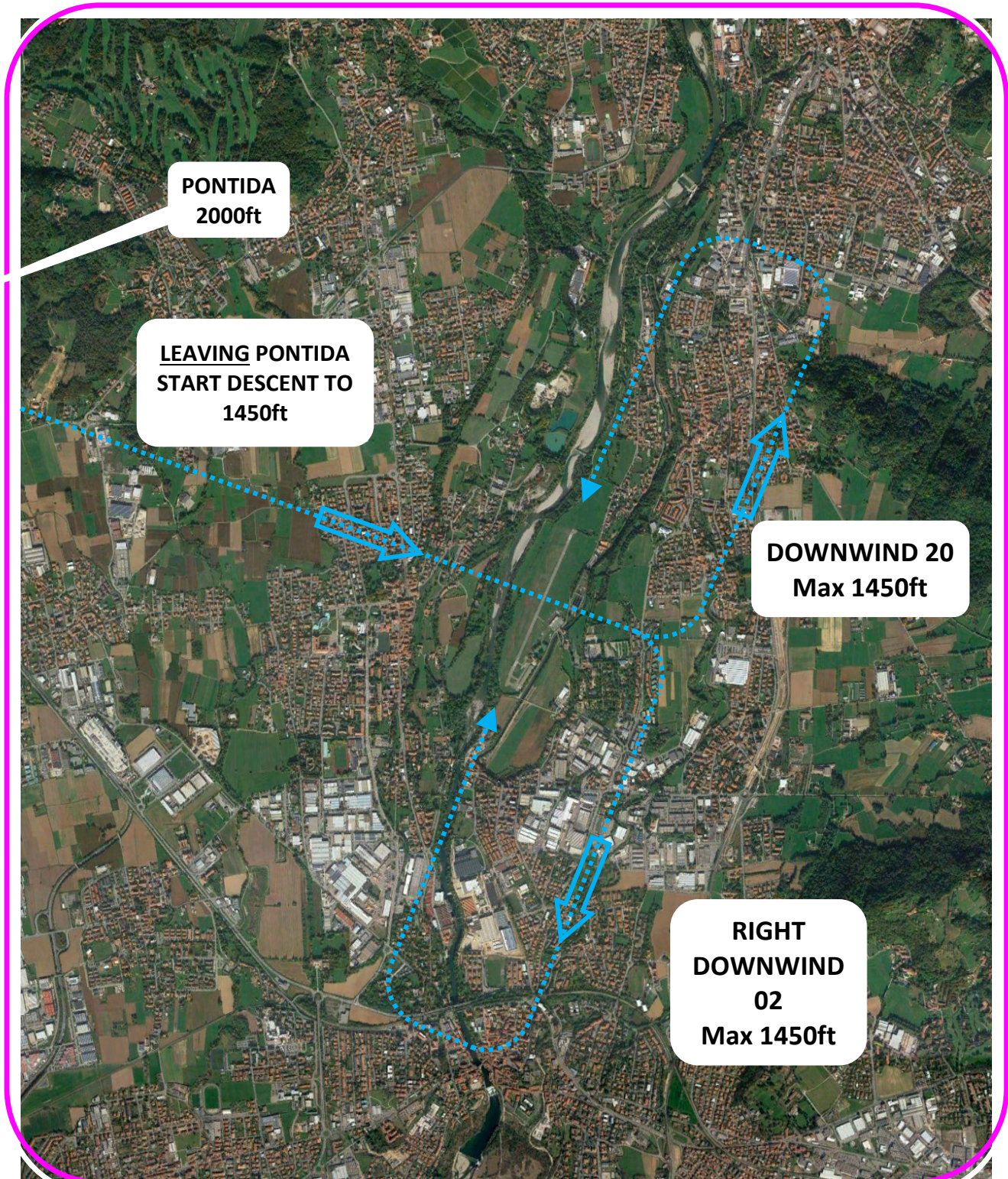
(OR VISIBILITY LESS THAT 5000MT AT ORIO)

The circuit altitude is lowered to 1450ft AMSL to stay below Orio's CTR 2.

The circuit for runway 02 becomes **right-hand pattern**.

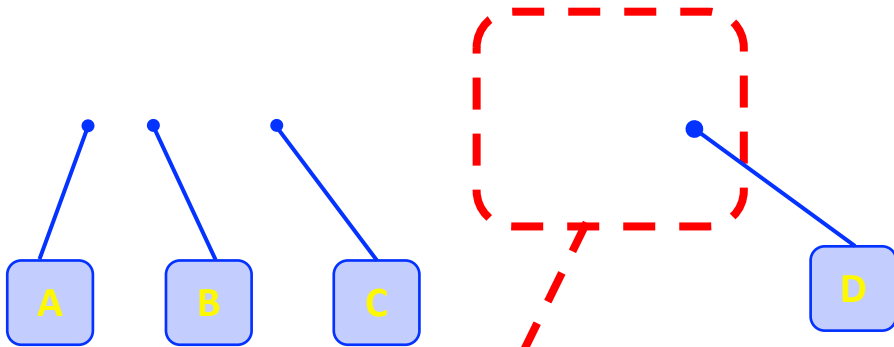
ARRIVING FROM THE SOUTH

After passing **Pontida**, begin descent to 1450ft.

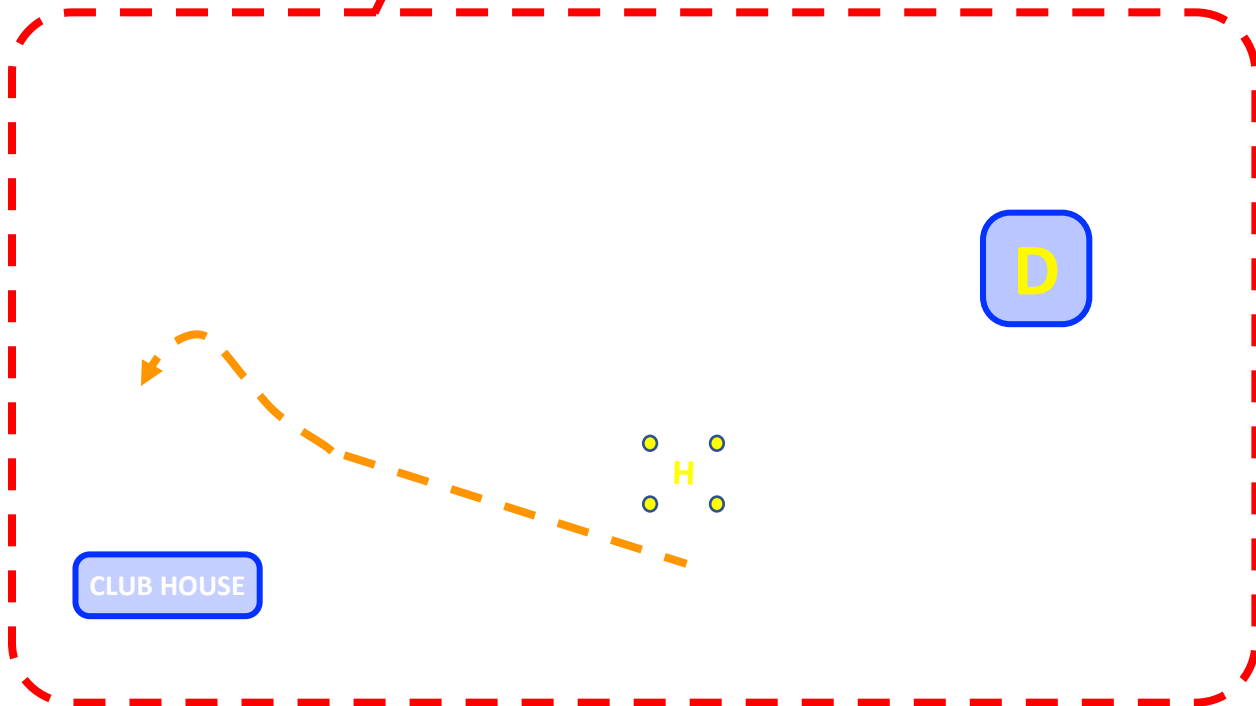




WHERE TO PARK



Vacate at **TAXIWAY DELTA**
Parking is located near the **windsock**



Proceed on foot to the **clubhouse**

An airport employee will open the gate for registration