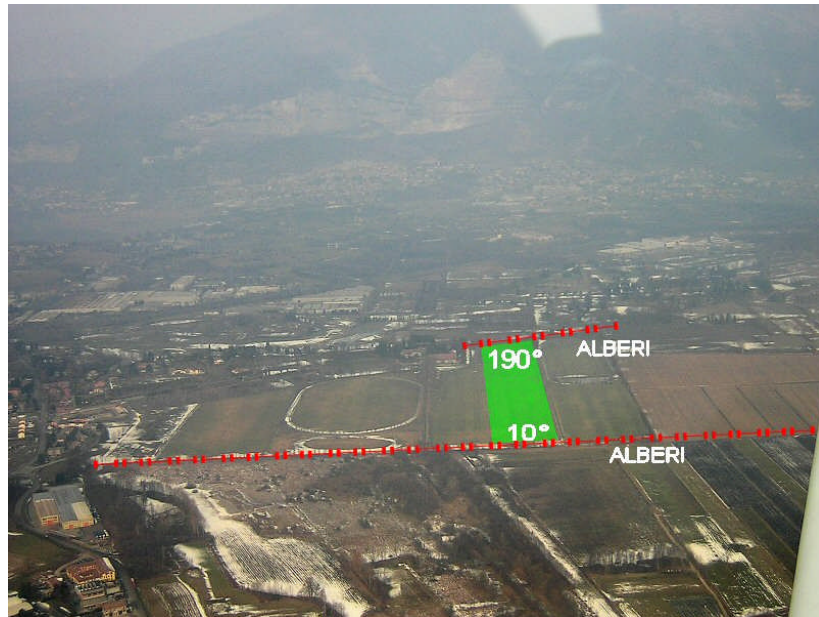


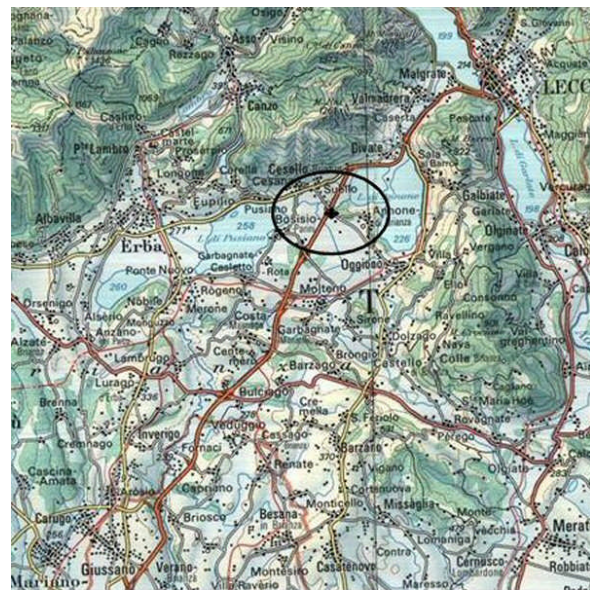
LA PONCIA

QNH = 270 m
 N = 45° 47' 47"
 E = 9° 18' 51"

OTTIMO



Attenzione alle porte da polo - Alternativa prato a sud



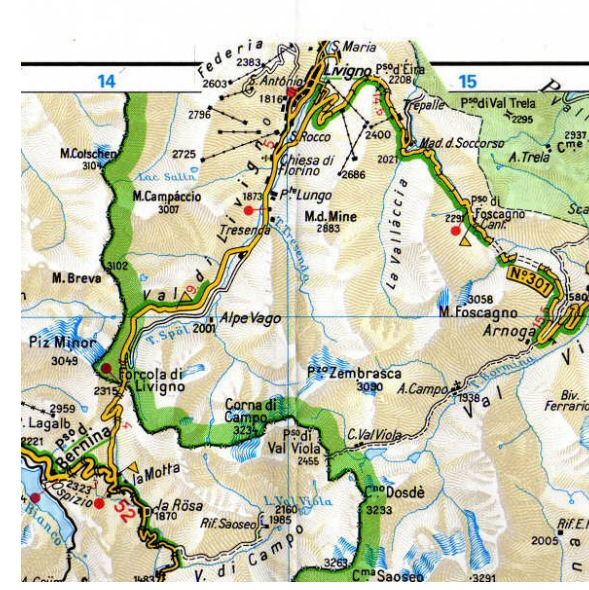
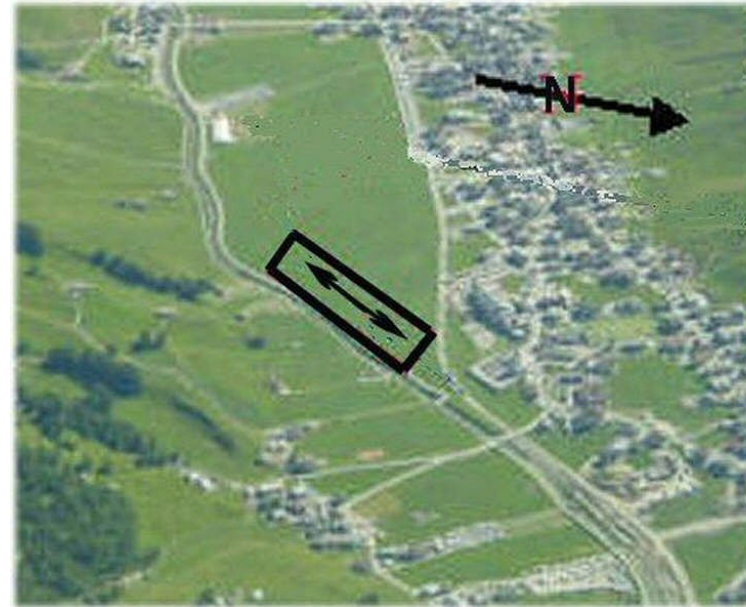
500 m ↑
 50 m ↔
 10° - 190° ↕

Aggiornamento al 06/12/15

LIVIGNO

QNH = 1810 m
 N = 46° 32' 40"
 E = 10° 08' 35"

BUONO



300 m ↑
 30 m ↔
 30° - 210° ↕

Aggiornamento al 03/10/15